

welcome to melbourne collagen foundation

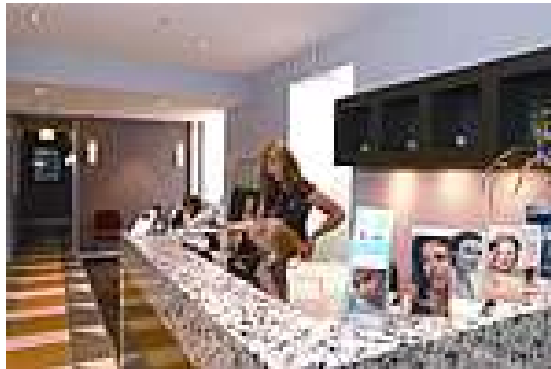
mcf was established in 1990 with the intent of focusing on the latest cosmetic procedures for all skin concerns. This is achieved by Dr. Peter Bartnicki (Cosmetic Physician) and his consultants, keeping up to date with the latest procedures, products and anti-ageing treatments. Dr Bartnicki has been in the Cosmetic field for over 15 years and is dedicated to bringing new techniques and procedures to his patients.

we are located at:

city
suite 101
no. 2 Collins Street
Melbourne 3000
phone: (03) 9654 6365

dandenong
shop 16
the hub arcade
Dandenong 3175
Phone: (03) 9793 2428

www.cosmeticskin.com.au



Type R / Type P

Type R is dermal filler. It is a crystal clear form of Hyaluronic acid which is a substance which occurs naturally in the body. Hyaluronic acid holds water, is hydrating and gives volume to the skin.

Is this for you?

You may be a candidate for Type R if:

- Your lips are not as full as you desire
- You have deep furrows between your eyebrows
- The lines across your face make you seem older than you are
- You have extremely deep frown lines
- You have deep lines from beside your nostril to the corners of your mouth

Is Type R safe?

More than 2 million people have been successfully treated in more than 70 countries around the world, since its launch in 1996. You can, therefore, be assured of its safety and efficacy.

What is the treatment like?

Tiny injections along the wrinkle correct the superficial lines and folds. After injection, the gel binds water and generally remains in the skin for many months.

What results can I expect?

Results are immediate. There is usually some associated swelling for 24-48 hours following the treatment.

How long does it last?

Most patients choose to have a follow-up treatment 6 – 12 months after initial treatment.

Will my face feel different?

Type R is a clear gel. You may have a little swelling at the site of the injection but this soon subsides once the Type R has settled into the area treated.

Is there any bruising or swelling?

Sometimes there is some minor bruising and generally the swelling will subside within 24-48 hours.

Nasolabial lines



before



after



before



after